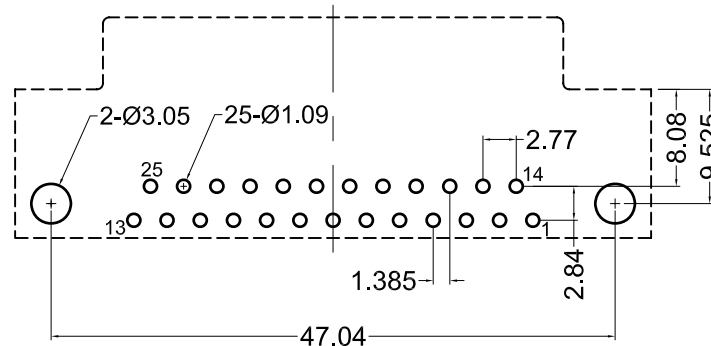
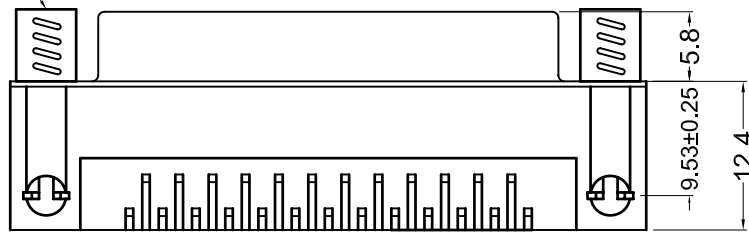


(2) #4-40 UNC Round Jackscrews
Riveted to Connector



Recommended PCB Layout
(Bottom View)

Material And Finish

Shell: steel, tin plated

Insulator: PBT
Thermoplastic
Glass fiber 30%
UL 94V-0
color-black

Contact Material:
phosphor bronze

Contact Plating Options:
Standard: gold flash on
mating end, tin on
termination end, nickel
underplate on entire contact

15 Option: 15u" gold on
mating end, tin on
termination end, nickel
underplate on entire contact

30 Option: 30u" gold on
mating end, tin on
termination end, nickel
underplate on entire contact

Specifications

Rated Current: 2A
Rated Voltage: 30V RMS

Withstanding Voltage:
500V (rms) AC for 1 min

Insulation Resistance:
more than 1000 Mohm
at 500v DC

Contact Resistance:
13 mohm Max

Dielectric Strength:
1000V for 1 min

Temperature Rating:
-55°C to +105°C

Ordering Information

| Part Number | Contact Area Plating Finish |
|----------------|-----------------------------|
| K22X-B25S-NR | Gold Flash (standard) |
| K22X-B25S-NR15 | 15u" Gold (15 option) |
| K22X-B25S-NR30 | 30u" Gold (30 option) |

Tolerances

X.X ± 0.25
X.XX ± 0.15
Unless Stated
Otherwise

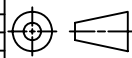


| REV. | DATE | DESCRIPTION | REV. BY | CHK. BY | DRAWN BY | DATE |
|------|----------|--------------|------------|---------|------------|---------|
| A1 | 10/27/05 | New Drawing | R. Aguirre | H. MA | R. Aguirre | 9/28/05 |
| A2 | 02/12/08 | ECO # 07-049 | S. Vien | H. MA | | |
| | | | | | | |
| | | | | | | |

K22X-B25S-NR

RT. Ang D-Sub, Female, 0.318" Footprint, RoHS Compliant

Round Jack Screws Riveted to Connector



UNITS
mm