

TYPE 57P

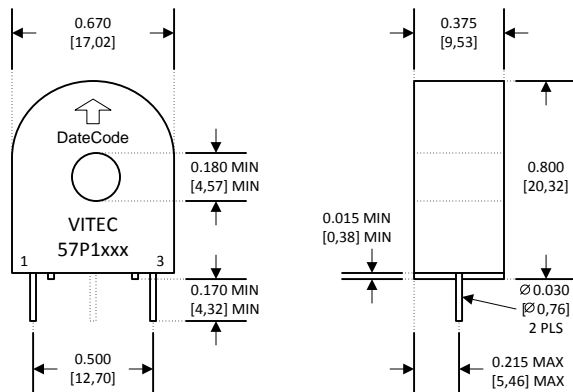
Current Sense Inductors

FEATURES

- Designed for use with switching power supplies.
- Frequency range above 50 KHz.
- Low cost epoxy encapsulated construction.
- Rated 20 Amp peak sense current.
- Materials meet flammability requirement of UL94V-0.
- Built to EN 60950:1992 A11:1997.
- RoHS compliant version available.

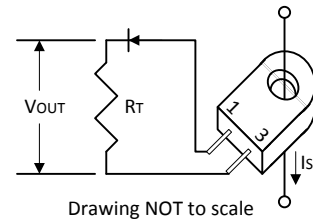


DRAWING

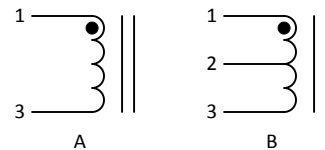


All dimensions given in inches [mm]. Tolerances unless otherwise specified: .XX±.01 [0,X±0,25]

TYPICAL APPLICATION CIRCUIT



SCHEMATICS



ELECTRICAL CHARACTERISTICS @ 25°C

Part Number		Turns	Inductance (1-3)	Inductance Test Volts	DCR (1-3)	Terminating Resistance*	Unipolar Rating	Schematic
Classic	RoHS		mH	Volt	Ohm	Ohm	Amp mSec	
57P1686	57PR1686	±5% 50	MIN 5.00	TYP 0.50	MAX 0.70	TYP 50	MAX 150	A
57P1687	57PR1687	100	20.00	1.00	1.40	100	300	A
57P1688	57PR1688	200	80.00	2.00	4.50	200	600	A
57P1820	57PR1820	300	180.00	3.00	11.00	300	900	A
57P1821	57PR1821	400	300.00	4.00	20.00	400	1200	A
57P1717	57PR1717	50CT	5.00	0.50	0.70	50**	150	B
57P1718	57PR1718	100CT	20.00	1.00	1.40	100**	300	B
57P1719	57PR1719	200CT	80.00	2.00	4.50	200**	600	B
57P1920	57PR1920	300CT	180.00	3.00	11.00	300**	900	B
57P1921	57PR1921	400CT	300.00	4.00	20.00	400**	1200	B

Add an "R" to the part number after "P" for the RoHS compliant version (i.e. 57PR1987 is the RoHS compliant version of 57P1687).

Notes: *For Voltage Across Terminating Resistance of 1 Volt per Ampere
 **For Center Tapped Units, Terminating Resistance for Each Half of Winding is 1/2 the Listed Value
 Test Frequency 10 KHz Request TUV Certificates When Ordering