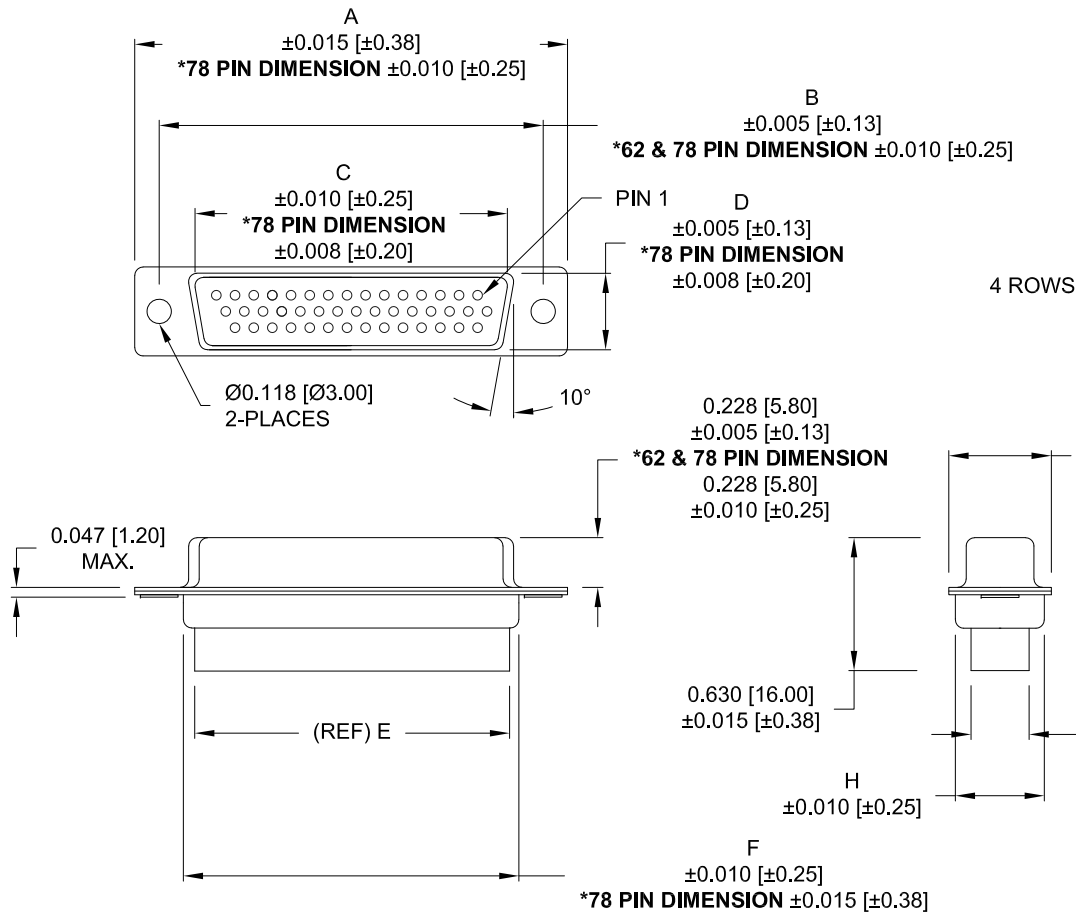


**\*\*NOTE: CONTACTS MUST BE PURCHASED SEPARATELY\*\***



		DIMENSIONS							
No. OF PINS		A	B	C	D	E	F	G	H
15		1.213	0.984	0.643	0.311	0.610	0.759	0.494	0.421
		30.81	24.99	16.33	7.90	15.50	19.28	12.55	10.70
26		1.541	1.312	0.970	0.311	0.964	1.089	0.494	0.421
		39.14	33.32	24.66	7.90	24.50	27.65	12.55	10.70
44		2.088	1.852	1.511	0.311	1.494	1.618	0.494	0.421
		53.04	47.04	38.38	7.90	37.95	41.10	12.55	10.70
62		2.736	2.500	2.157	0.311	2.142	2.262	0.494	0.421
		69.50	63.50	54.80	7.90	54.40	57.46	12.55	10.70
78		2.644	2.406	2.061	0.422	2.035	2.169	0.605	0.527
		67.16	61.11	52.34	10.72	51.70	55.10	15.37	13.40

**180-YYY-27YLYY0**

SERIES \_\_\_\_\_

POSITIONS \_\_\_\_\_

015 \_\_\_\_\_

026 \_\_\_\_\_

044 \_\_\_\_\_

062 \_\_\_\_\_

078 \_\_\_\_\_

GENDER \_\_\_\_\_

2 = FEMALE

TERMINATION \_\_\_\_\_

7 = CRIMP & LOAD

SHELL PLATING \_\_\_\_\_

2 = TIN (DISCONTINUED)

3 = NICKEL

RoHS COMPLIANT (230°C) \_\_\_\_\_

HARDWARE OPTIONS \_\_\_\_\_

00 = NO HARDWARE

01 = .157" CLINCH NUT (SOLDER SIDE)

02 = .250" CLINCH NUT (SOLDER SIDE)

03 = .250" CLINCH NUT (MATING SIDE)

PLATING OPTIONS \_\_\_\_\_

0 = NO CONTACTS

**MATERIAL:**

SHELL: NICKEL PLATED STEEL  
 INSULATOR: PBT +30% GF, UL 94 V-0

**ELECTRICAL:**

INSULATION RESISTANCE: 1,000 MOhms MIN.  
 VOLTAGE: 500VAC FOR 1 MINUTE  
 TEMPERATURE: -50° C TO 100° C

UNITS = inch[mm]

**DO NOT SCALE FROM DRAWING**

	THESE DRAWINGS AND SPECIFICATIONS ARE THE PROPERTY OF NorComp AND SHALL NOT BE REPRODUCED, COPIED OR USED AS THE BASIS FOR THE MANUFACTURE OF SALE OF APPARATUS WITHOUT WRITTEN PERMISSION.		DRAWN: <b>PAM JENKINS</b>	DATE: <b>7-19-05</b>
	<h1>NorComp</h1>		SCALE: NTS	SHEET OF 1 2
DWG NO. <b>180-YYY-27YLYY0</b>				

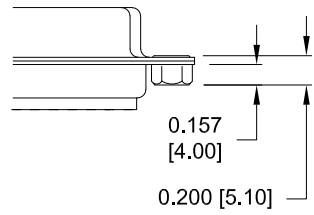
**RoHS COMPLIANT**

**TOLERANCE:**  
ALL DIMENSIONS ARE ±0.010

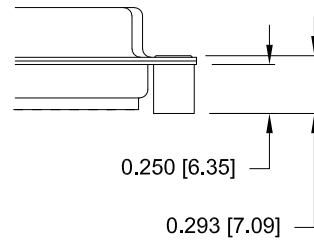
**ALL CLINCH-NUTS ARE 4-40 INTERNAL THREADS**

UNITS = inch[mm]

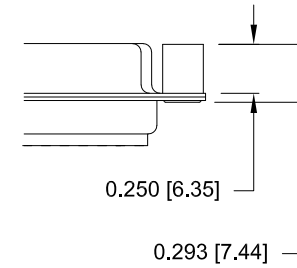
01X ..... 0.157" (SOLDER SIDE)




02X ..... 0.250" (SOLDER SIDE)



03X..... 0.250" (MATING SIDE)



**DO NOT SCALE FROM DRAWING**

	THESE DRAWINGS AND SPECIFICATIONS ARE THE PROPERTY OF NorComp AND SHALL NOT BE REPRODUCED, COPIED OR USED AS THE BASIS FOR THE MANUFACTURE OF SALE OF APPARATUS WITHOUT WRITTEN PERMISSION.		DRAWN: <b>PAM JENKINS</b>	DATE: <b>7-19-05</b>
	<h1>NorComp</h1>		SCALE: NTS	SHEET 2 OF 2
DWG NO. <b>180-YYY-27YLYY0</b>				

**RoHS COMPLIANT**