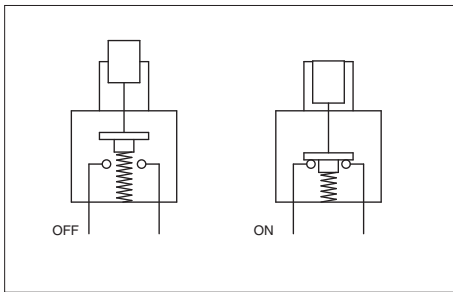


New!

AV series

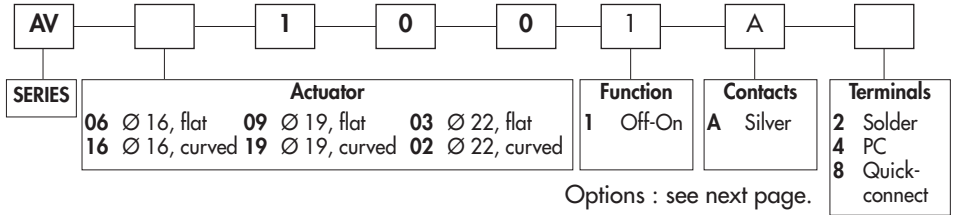
Security pushbutton switches suitable for 250VAC - approved according to EN 61058-1

Ø 16 mm (.629), Ø 19 mm (.748), Ø 22 mm (.866) - Latching action



ORDER FORMAT

AV250V1507-A



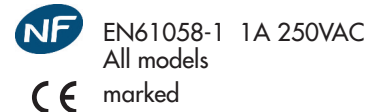
SPECIFICATIONS

- Max. current/voltage rating with resistive load : 1A 250VAC
- Initial contact resistance : 50mΩ max.
- Insulation resistance : 1.000 MΩ min. at 500VDC
- Dielectric strength : 2.000 Vrms 50 Hz min. between terminals
500 Vrms 50 Hz between terminals and frame
- Electrical life : 10.000 cycles at 1A 250VAC
- Torque : 5 Nm min. - 14 Nm max. applied to nut
- Panel thickness :
- Operating temperature : -30°C to +70°C
- Low level or mechanical life : 200.000 cycles
- Hand soldering : 300°C, 4 sec. max.
- Packaging unit : 25 pieces

MATERIALS

- Case : PA4-6, UL94-V0
- Contacts : silver (A)
- Bushing & actuator : see next page

AGENCY APPROVAL



To order a product, select a basic model below and add the desired options.

BASIC MODEL

Products shown in OFF position.

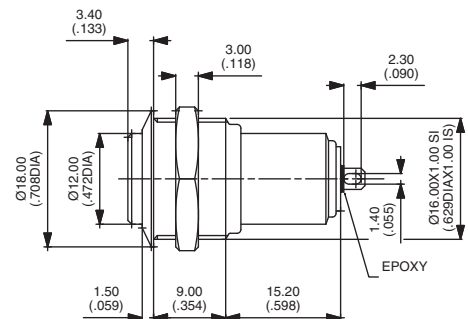
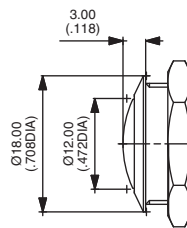
Ø 16 (.629) - flat or curved actuator - solder lug terminals

Hex nut 19 (.748) across flats



Flat actuator
AV061001A2 OFF - ON

Curved actuator
AV161001A2 OFF - ON



Panel cut-out : Ø 16,2 mm (.637)

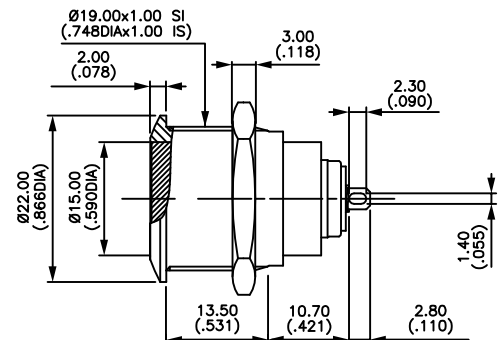
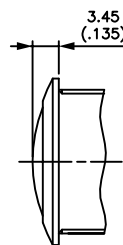
Ø 19 (.748) - flat or curved actuator - solder lug terminals

Hex nut 22 (.866) across flats



Flat actuator
AV091001A2 OFF - ON

Curved actuator
AV191001A2 OFF - ON



Panel cut-out : Ø 19,2 mm (.755)

The company reserves the right to change specifications without notice.

AV series

New!

Security pushbutton switches suitable for 250VAC - approved according to EN 61058-1

Ø 16 mm (.629), Ø 19 mm (.748), Ø 22 mm (.866) - Latching action

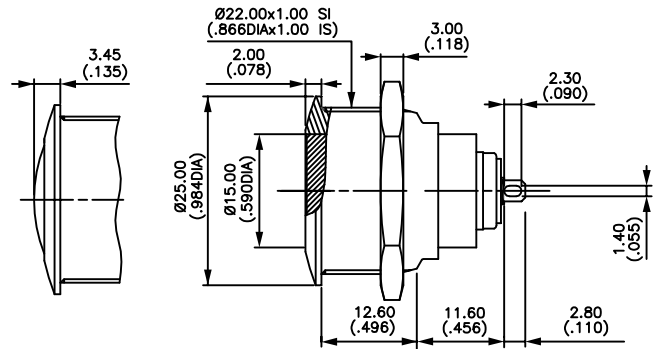
Ø 22 (.866) - flat or curved actuator - solder lug terminals

Hex nut 25 (.984) across flats



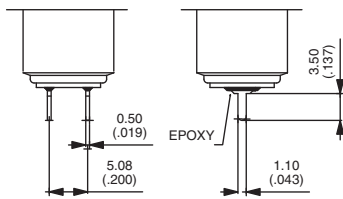
Flat actuator
AV031001A2 OFF - ON

Curved actuator
AV021001A2 OFF - ON



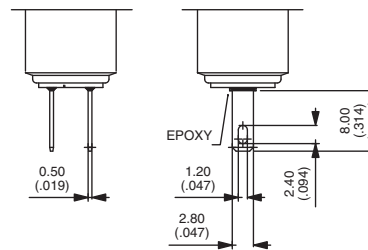
Panel cut-out : Ø 22,2 mm (.874)

Straight PC terminals



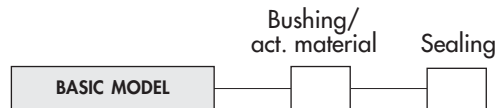
Replace 2 with 4 at the end of the model numbers shown on previous page & above.

Quick-connect terminals



Replace 2 with 8 at the end of the model numbers shown on previous page & above.

After selecting basic model number, fill in last 2 boxes with desired options.

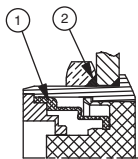


BUSHING/ACTUATOR MATERIALS

CODE	BUSHING	ACTUATOR
00 (std)	Nickel plated brass	Nickel plated brass
10	Nickel plated brass	Stainless steel
40	Stainless steel	Stainless steel

SEALING

Blank No sealing



K Frontal panel sealing (IP65)

- ① elastomeric membrane
- ② external gasket

AV250V1507-A